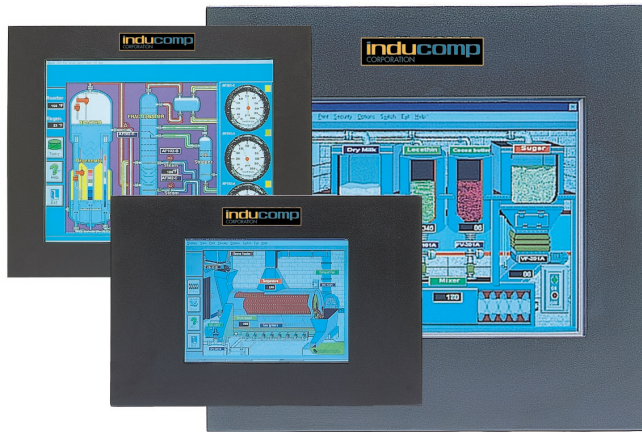


SPLASHview™ INDUSTRIAL PANEL MOUNT COMPUTERS

10.4", 12.1", 15.0", 18.0", 20.0" Solutions



INDUCOMP's Innovative SPLASHview™ series of Panel Mount PC's offers maximum flexibility offering a 10.4", 12.1" 15.0", 18.0" or 20.0" bright LCD screen.

All SPLASHview™ configurations include a protective plexiglass or optional resistive touch screen. The resistive touch screen can perform mouse functions within the LCD area and keyboard functions can be accomplished with an optional on-screen keyboard.

All panel mount configurations are constructed of rugged steel. The front bezel adheres to NEMA 4X standards. The PC can be configured with Intel Pentium® processors, standard memory and hard drives. The SPLASHview™ offers a perfect solution for a factory floor, multimedia or OEM machine control applications.



Features at a Glance

- Adheres to NEMA 4X standards. Rugged Stainless Steel Bezel
- 10.4", 12.1", 15.0", 18.0" or 20.0" LCD screens
- Resistive analog touch screen is optional
- Intel Pentium® class processors at varying performance speeds
- Standard ATX mother board configuration
- Industry Standard ISA and PCI slots
- Easy access to all boards and power supply
- Reliable proven solution
- Made in the USA

TECHNICAL SPECIFICATIONS

SPLASHview™

Configuration Information

Description	S-2000 Series	S-5000 Series	S-7000 Series
Bezel	Stainless Steel	Stainless Steel	Stainless Steel
Processor	Pentium® III 733	Pentium® III 733	Pentium® III 733
Memory	128 MB SDRAM	128 MB SDRAM	128 MB SDRAM
Hard Drive	40 GB	40 GB	40 GB
Ethernet	10/100 MB	10/100 MB	10/100 MB
Ports	2-serial, 1-parallel, Mouse & Keyboard, VGA	2-serial, 1-parallel, Mouse & Keyboard, VGA	2-serial, 1-parallel, Mouse & Keyboard, VGA, 2-USB
Floppy Drive	External Port	Internal Drive and External FDD Port	Internal Drive and External FDD Port
CD-ROM	N/A	Internal CD-ROM	Internal CD-ROM
Card Slots	2-ISA (Pass/BP) 2-PCI (Pass/BP)	2-Full Length ISA (Pass/BP) 3-Half Length ISA (Pass/BP)	1-Full Length ISA (mother board) 5-PCI (mother board)
Operate System	Windows® 2000 (Opt.95/98/NT/XP/Linux)	Windows® 2000 (Opt.95/98/NT/XP/Linux)	Windows® 2000 (Opt.95/98/NT/XP/Linux)
Touch Screen	Resistive	Resistive	Resistive

SPLASHview™ Unit Information

S-2000 Series

S-2010	10.4" LCD TFT	300 nits	640x480	Dim: 15.75" (L) x 10.625" (W) x 5.750" (D)	15.0 lbs
S-2012	12.1" LCD TFT	280 nits	800X600	Dim: 15.75" (L) x 12.125" (W) x 5.750" (D)	15.0 lbs

S-5000 Series

S-5010	10.4" LCD TFT	300 nits	800x600	Dim: 15.750" (L) x 12.156" (W) x 5.750" (D)	19 lbs
S-5012	12.1" LCD TFT	280 nits	1024x768	Dim: 15.750" (L) x 12.156" (W) x 5.750" (D)	19 lbs

S-7000 Series

S-7015	15.0" LCD TFT	250 nits	1024x768	Dim: 16.630" (L) x 12.630" (W) x 7.760" (D)	21 lbs
S-7018	18.0" LCD TFT	300 nits	1280x1024	Dim: 18.625" (L) x 16.125" (W) x 7.760" (D)	33 lbs
S-7020	20.0" LCD TFT	250 nits	1280x1024	Dim: 21.000" (L) x 17.500" (W) x 8.535" (D)	37 lbs

**Note: Processors, memory and hard drives can be upgraded to higher speeds and capacity.
Call for pricing and configuration options.**

Made in USA

Specifications can change at any time without notice



www.inducomp.com

Represented by: